







DataSelf

INFORMED DECISIONS

Fulfilled by
Acumatica

Fast-Tracking Business Intelligence

BEFORE	DataSelf Analytics BI-BASED REPORTING®			AFTER
Limited KPI Visibility				360-Degree Business View
Conflicting Data				Single Version of the Truth
Laborious Reports				Automated & Streamlined
Slow-Running Reports				Insights in Seconds
Data Silos				Data Consolidation
Limited Drill-Down				Infinite Drill-Down
Hunting for Answers				AI-Driven Insights
What to Measure?				Largest KPI Library
	DATA WAREHOUSING   Dimension, Fact, Time 	ANALYTICS   	KPI LIBRARY 8,000+ Customizable Reports & Dashboards	

Customizable Reports & Dashboards for Acumatica ERP/CRM and other data silos

430+ no-code/low-code supported data sources

Too much data, too little insight?

DataSelf uses a unique combination of data optimization, BI tools, and a **library of analytics for superior business insight.**

A 'single version of the truth' enables management and executives to trust the data and make the **most informed business decisions.**

BENEFITS

POWER via Auto-Configuration & Data Optimization

The core component is **DataSelf ETL+**, the most advanced data optimization and data warehousing technology on the market. It simplifies and expedites the report design and production process for Acumatica and all your business apps – individually and blended.

EASE-OF-USE via Top Analytical Tools

DataSelf works with the top BI Technologies: **Microsoft Power BI, Tableau, and Microsoft Excel** to enable infinite drill-down and slice-and-dice.

Additionally, Artificial Intelligence (AI) / Machine Learning (ML) lets users find answers to their data questions in plain English.

SPEED via Library of Analytics for Acumatica

DataSelf includes the **largest library of analytical reports, dashboards, and KPIs** in the market.

From year-over-year sales variances and predicting potential inventory shortages, to forecasting future cash-flow; **reports run in less than 10 seconds** making it easier and faster to get to the bottom line.

CUSTOMER QUOTES

"We are big users of DataSelf / Tableau reports and love them!"



Sean Chatterjee
SVP, Americas

"I'm impressed with the results including a 23% growth in EBITDA year over year. Our DataSelf reports give us more visibility than we've ever had, which has led to better and more timely decisions to grow our business."



Peter Paindiris
President

"Our whole team appreciates how quickly and easily we can get the data we need. Before DataSelf, I was writing new GLs left and right, each taking anywhere from 1-2 hours. The equivalent DataSelf report takes only 5-10 minutes!"



Chris Goebel
ERP Analyst

"All of our end users have received DataSelf with applause and 'wow moments'. I use DataSelf daily and have not encountered any limitations on scale."



Tom Vance
VP of Operations



The industry's largest library with 8,000+ reports & dashboards*

Sales & Marketing

- Salesperson Performance
- Customers With Underperforming Sales
- Products With Underperforming Sales
- Top Customers By Sales Decline
- Customers That Stopped Buying
- Customer Lifetime Value Forecasting
- Year-Over-Year Comparisons
- Regional / Geographic Breakdown
- Seasonal Variances
- Sales & Gross Profit Pareto Analysis
- Product Profitability By Price Point
- Sales Projection & Ranking
- Commission Reporting
- Sales Velocity
- Campaign Response Analytics
- Cost Per Lead / Cost Per Sale
- Stuck Opportunities

Financials & Cash Flow

- Cash Flow Projection
- P&L Analytics
- Balance Sheet Analytics
- Actual Versus Budget
- Year-Over-Year Comparisons
- Collection Effectiveness Index
- Bad Debt Analysis
- Days Sales Outstanding

Inventory Management

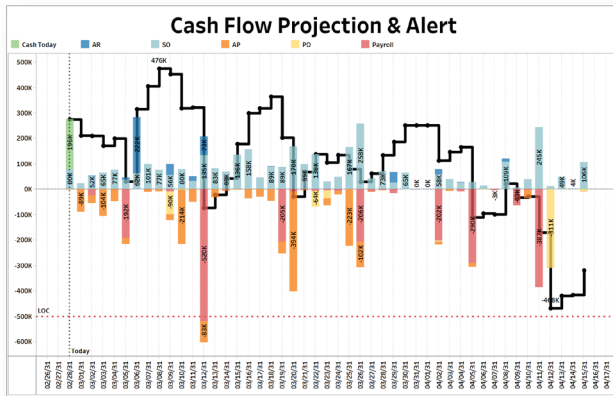
- Stock Utilization Projections
- Potential Stock Shortfall & Outage Warnings
- Forecast Surplus Items
- Slow Moving Items
- Inventory Transfer Optimization
- Days Of Stock
- Lost Sales From Stock Shortfalls
- Inventory Turnover
- Stock Usage By Year, Month, Week, & Day
- Bill Of Materials (BOM)
- Production Orders
- Replenishment Planning
- Purchase Price Variance
- Item Purchase Recommendations
(Best Time / Best Supplier)

Services

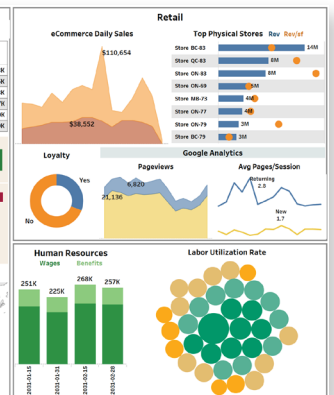
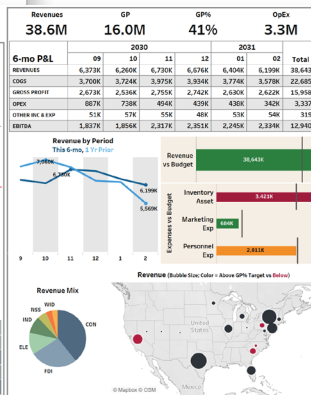
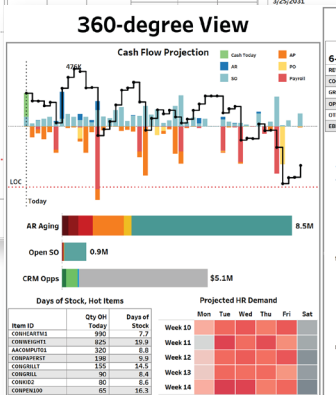
- Job Costing Metrics
- Project Cost / Revenue Analysis
- Metrics On Material Usage
- Hours; Estimated vs Actual, Overtime Analysis
- Client Support Costs; Per Case, Per User, Per Product
- Clients In Need Of Additional Services
- Re-prioritization Of Critical Support Cases
- Resource Availability
- Performance Breakdown By Worker, Department, & Projects

**Most templates may be used as is, others require customizations.*

Samples from the 8,000+ KPI Library

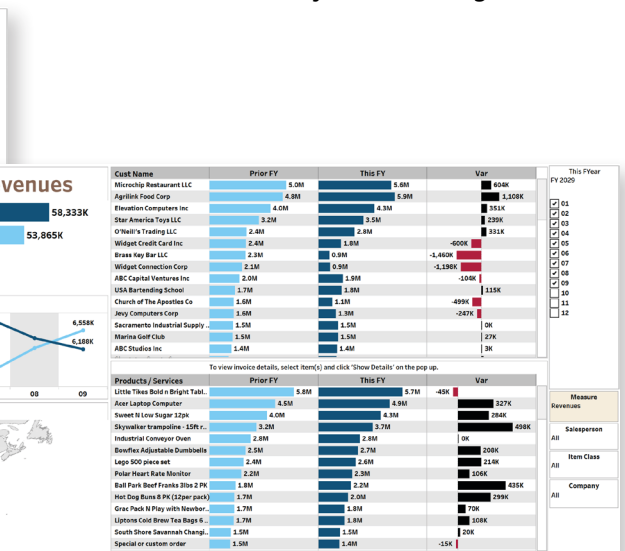
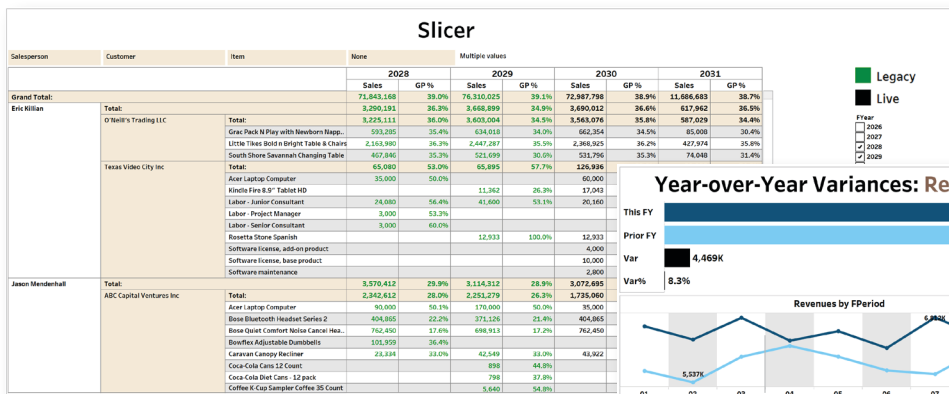


Due Date	Org Name	Tran Type	Doc No	Bal	Accrued	Due Date
2/28/2023	Null	Cash Today		196,492	196,492	2/28/2023 to 4/15/2...
01/17/23	AP	AP 000668		200	196,292	
01/20/23	SO	SO-021435	30	196,114		Branch
01/24/23	SO	SO-021450	330	196,444		All
01/24/23	SO	SO-021476	39,242	213,686		
01/25/23	SO	SO-021500	305	215,991		Dec No
01/25/23	SO	SO-021528	213	216,204		All
01/25/23	SO	SO-021529	86	216,291		Org Name
01/25/23	SO	SO-021532	27	216,318		All
01/25/23	SO	SO-021533	34	216,352		
01/25/23	SO	SO-021534	24	216,375		Cash Flow Adj
01/25/23	SO	SO-021553	62	216,438		3/25/2023



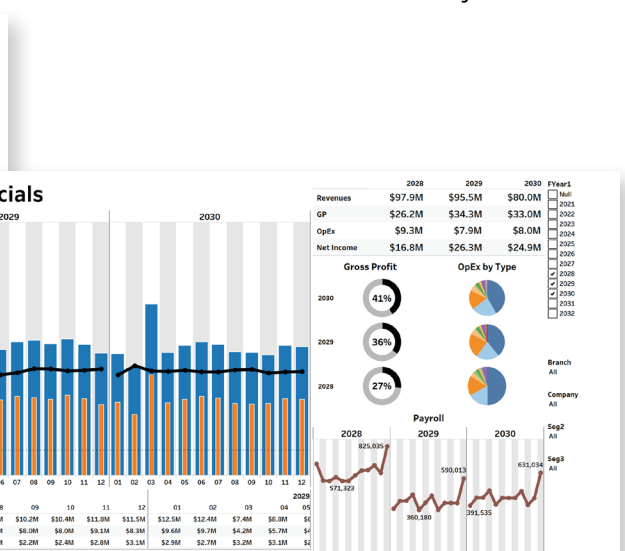
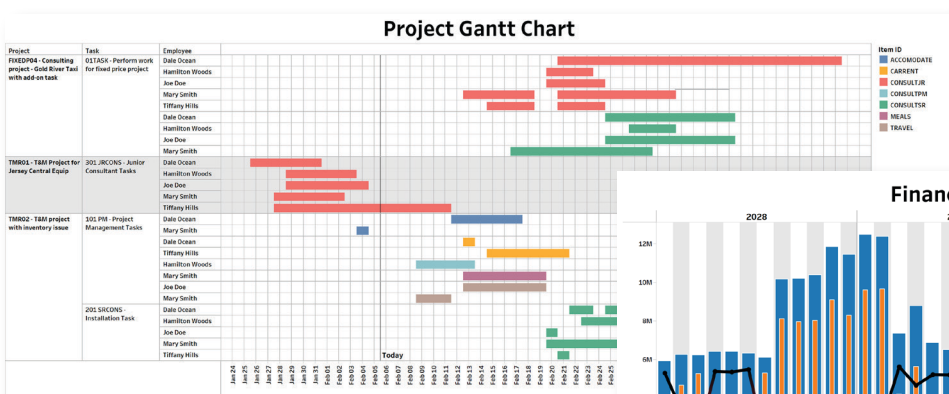
Improve projections on cash flow, sales, and inventory.

Give executives all they need – at a glance.



Leverage infinite slice-and-dice & drill-down.

Detect variance anomalies across your data.



Manage projects – with great efficiency.

Have a clearer picture of your financial standing.